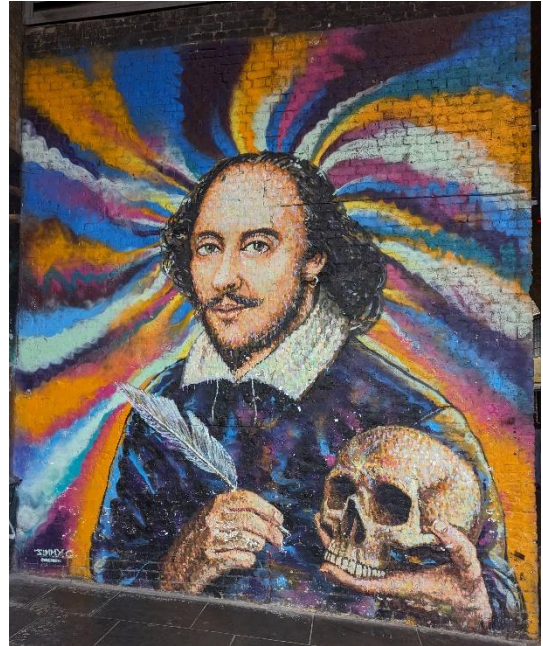


# English 499A: Staging London Summer 2025 London, UK



Instructor: Phillip Zapkin  
WhatsApp: 1-585-406-7649  
Email: [pzz17@psu.edu](mailto:pzz17@psu.edu)

Office: Regular Classroom  
Office Hours: Most Thurs. 12-1PM, Wed. 18 June 12-1PM

---

## Course Description

London has one of the most impressive and prolific theatre cultures in the world, with many plays set in London itself. This course will capitalize on London's theatre to both see and read plays about the city. Combining a central focus on metatheatrical performance and identity with an examination of how theatre culture functions to shape the space of London itself (particularly the West End and Southwark) we will consider what it means to perform London within London itself. Our readings will be supplemented by tours of famous theatres, like Shakespeare's Globe and the National Theatre, which will develop our understanding of London's long history of classical and experimental performance styles.

---

## Required Books and Materials

### Required:

- Chakrabarti, Lolita. *Red Velvet*. Methuen Drama, 2021. ISBN: 978-1-3501-4913-7.
- Churchill, Caryl. *Cloud 9*. Theatre Communications Group, 2004. ISBN: 978-1-55936-099-2.
- [UK Power Adapter](#).

### Strongly Recommended:

- [London A-Z Pocket Atlas](#). 12<sup>th</sup> ed., HarperCollins UK, 2023. ISBN: 9780008581770.
- Shakespeare, William. *The Merry Wives of Windsor*. Folger Shakespeare Library, 2004. ISBN: 978-1-9821-5688-6. (Available digitally on Canvas)
- Wilde, Oscar. *Lady Windermere's Fan*. Dover, 1998. ISBN: 978-0-486-40078-5. (Available digitally on Canvas)

## Assignments and Grading

Assignment	Percentage
Reading Response	15%
Theatre Response	15%
Group Performance x2	20% (10% each)
Term Paper Proposal	5%
Term Paper	30%
Participation	15%
Total	100%

All assignments have deadlines listed on the schedule, but you can complete any of the response papers earlier, if you'd like. Perhaps you really enjoy something we read or see early in the trip and want to write about that. Perhaps you want to get those assignments out of the way so you can enjoy the rest of the trip without worrying about them.

### *Extra Credit*

I am offering two extra credit opportunities.

1. London is full of "[blue plaques](#)" put up by English Heritage to mark locations with important historical significance. On Canvas, I will post a checklist of five blue plaques related to this course. Find each of those five blue plaques and turn in a selfie with yourself and the blue plaque in it, and you will earn a 1/3 letter grade bonus.
2. On my YouTube channel, I have a "[Hump Day Poetry](#)" series, where each Wednesday a reading of a poem is posted. Upload to this [dropbox](#) a video, recorded in London, of yourself reading the Hump Day Poetry Script and then one of your favorite poems by a British poet, and you will earn a 1/3 letter grade bonus. I will post these videos to YouTube and send you a link when they go live. Please label the file with your last name, the name of the poet, and the title of the poem.

### **Attendance**

Students are expected to attend all classes and trip activities. If, for some reason, you cannot attend a class or activity (e.g., due to illness), you must notify Abigail and I *immediately*. Depending upon the situation, we will determine an individual course of action as far as keeping you on track for the course and any grade penalties that may be necessary.

### **Academic Integrity**

Academic integrity is the pursuit of scholarly activity in an open, honest and responsible manner. Academic integrity is a basic guiding principle for all academic activity at The Pennsylvania State University, and all members of the University community are expected to act in accordance with this principle. Consistent with this expectation, the University's Code of Conduct states that all students should act with personal integrity, respect other students' dignity, rights and property, and help create and maintain an environment in which all can succeed through the fruits of their efforts.

Academic integrity includes a commitment by all members of the University community not to engage in or tolerate acts of falsification, misrepresentation or deception. Such acts of dishonesty violate the fundamental ethical principles of the University community and compromise the worth of work completed by others.

*You must complete this work entirely on your own. You may not assist other students or use any online sites (e.g., Course Hero or Chegg), technologies (e.g., ChatGPT, language translators), tools, or sources that are prohibited.*

---

### **Accessibility: Disability Accommodation**

Penn State welcomes students with disabilities into the University's educational programs. Every Penn State campus has an office for students with disabilities. The Student Disability Resources Web site provides contact information for every Penn State campus ([equity.psu.edu/student-disability-resources](https://equity.psu.edu/student-disability-resources)). For further information, please visit the Student Disability Resources website at [equity.psu.edu/sdr](https://equity.psu.edu/sdr).

In order to receive consideration for reasonable accommodations, you must contact the appropriate disability services office at the campus where you are officially enrolled, participate in an intake interview, and provide documentation ([equity.psu.edu/student-disability-resources/applying-for-services](https://equity.psu.edu/student-disability-resources/applying-for-services)). If the documentation supports your request for reasonable accommodations, your [campus's disability services office](#) will provide you with an accommodation letter. Please share this letter with your instructors and discuss the accommodations with them as early in your courses as possible. You must follow this process for every semester that you request accommodations.

---

### **Education Equity: Affirmative Action**

Penn State takes great pride to foster a diverse and inclusive environment for students, faculty, and staff. Acts of intolerance, discrimination, or harassment due to age, ancestry, color, disability, gender, gender identity, national origin, race, religious belief, sexual orientation, or veteran status are not tolerated and can be reported through Educational Equity via the [Report Bias webpage](#) ([equity.psu.edu/reportbias](https://equity.psu.edu/reportbias)).

---

### **Counseling and Psychological Services**

Many students at Penn State face personal challenges or have psychological needs that may interfere with their academic progress, social development, or emotional wellbeing. The university offers a variety of confidential services to help you through difficult times, including individual and group counseling, crisis intervention, consultations, online chats, and mental health screenings. These services are provided by staff who welcome all students and embrace a philosophy respectful of clients' cultural and religious backgrounds, and sensitive to differences in race, ability, gender identity and sexual orientation.

- Counseling and Psychological Services (CAPS): 814-863-395,
  - <https://studentaffairs.psu.edu/counseling>
- Penn State Crisis Line (24 hours/7 days/week): 877-229-6400
- Crisis Text Line (24 hours/7 days/week): Text LIONS to 741741

---

### **Standards of Classroom/Study Abroad Behavior**

Classroom behavior should always reflect the essential Penn State values of civility, integrity, and respect for the dignity and rights of others. As such, the classroom space should be safe, orderly, and positive—free from disruptions, disorderly conduct, and harassment as defined in the

University Code of Conduct (<https://studentaffairs.psu.edu/student-accountability/code-procedures/student-code-conduct>). The University Code of Conduct defines disruption “as an action or combination of actions by one or more individuals that unreasonably interferes with, hinders, obstructs, or prevents the operation of the University or infringes on the rights of others to freely participate in its programs and services;” disorderly conduct includes but is not limited to “creating unreasonable noise; pushing and shoving; creating a physically hazardous or physically offensive condition;” and harassment may include “directing physical or verbal conduct at an individual...; subjecting a person or group of persons to unwanted physical contact or threat of such; or engaging in a course of conduct, including following the person without proper authority (e.g., stalking), under circumstances which would cause a reasonable person to fear for his or her safety or the safety of others or to suffer emotional distress” (Section IV, B). The course instructor has the authority to request that any disruptive students leave the class for the class period. If disruptive behavior continues in subsequent class periods, a complaint may be filed with the Office of Student Conduct, which may result in the student being dismissed from class until University procedures have been completed. Any student with concerns or questions as to this policy should contact the Director of the Program in Writing and Rhetoric.

### Course Schedule

This schedule is subject to change by me. I will notify you ahead of time in class and/or by email of any changes.

- Dates and times of 499A class meetings are listed in black. Please be prepared to discuss whatever course material is listed on the schedule for that day.
- **Dates and times of non-class activities are listed in red. Please be aware that the times listed for activities are the start and end times for those activities themselves—this does not include travel times. Please pay attention to when and where we will meet for these activities.**
- Unless otherwise stated (i.e., for the Term Paper deadline) all times are given in Greenwich Mean Time—London’s time zone.

#### Week 1: 15-20 June

Date and Time	Activity
Sunday 15 June	Students arrive in London
Sunday 15 June	EF Tours Orientation
Sunday 15 June 5:30PM	Welcome dinner <a href="#">Hoop &amp; Grapes</a>
Monday 16 June, 10AM	EF Tours Guided Introduction
Monday 16 June, 5-7PM	First 499A class: <ul style="list-style-type: none"> <li>• Introductions</li> <li>• Course Goals</li> <li>• Introduce Theatre Response and Reading Response assignments</li> <li>• Discuss “Reading Drama_ <i>Broadview Anthology of Drama</i>” (available on Canvas)</li> </ul>

Tuesday 17 June, 1-3PM	499A class: <ul style="list-style-type: none"> <li>Discuss <i>Lady Windermere's Fan</i>, Acts I and II (available on Canvas)</li> </ul>
Wednesday 18 June, 1-3PM	499A class: <ul style="list-style-type: none"> <li>Discuss <i>Lady Windermere's Fan</i>, whole play</li> <li>Crash course on thesis statements</li> </ul>
Wednesday, 18 June, 7PM	SHOW 1 Roald Dahl's <i>Matilda: The Musical</i> at Cambridge Theatre
Thursday, 19 June 11AM	<a href="#">Black Cultural Archives</a>
Thursday 19 June, 5-7PM	499A class: <ul style="list-style-type: none"> <li>Discuss <i>Matilda: The Musical</i></li> </ul> Crash course on scholarly research

#### Week 2: 23-27 June

Date and Time	Activity
Monday 23 June, 1-3PM	499A class: <ul style="list-style-type: none"> <li>Discuss <i>Cloud 9</i>, Act One</li> <li>Discuss Bertolt Brecht's "The Street Scene" (available on Canvas)</li> </ul>
Tuesday 24 June, 1-3PM	499A class: <ul style="list-style-type: none"> <li>Discuss <i>Cloud 9</i>, whole play</li> <li>Introduce Group Performances and Term Paper</li> </ul>
Tuesday 24 June, 7:30PM	SHOW 2 John Cleese's <i>Fawlty Towers</i> at Apollo Theatre
Wednesday 25 June, 11:30AM-1PM	499A class: <ul style="list-style-type: none"> <li>Discuss <i>Fawlty Towers</i></li> <li>Crash course on academic paragraphs</li> </ul>
Wednesday 25 June, 2PM	<a href="#">Florence Nightingale Museum</a>
Thursday 26 June, 1-3PM	499A class: <ul style="list-style-type: none"> <li>Group Performances: <i>Lady Windermere's Fan</i> and <i>Cloud 9</i></li> <li>Crash course on MLA</li> </ul>
Thursday 26 June, 5PM	Tour of the National Theatre
Friday 27 <sup>th</sup> June, TIME	Day Trip to Lewes and <a href="#">Monk's House</a> tour

#### Week 3: 30 June-5 July

Date and Time	Activity
Monday 30 June, 1-3PM	499A class: <ul style="list-style-type: none"> <li>Discuss <i>Red Velvet</i>, Scenes 1-3</li> </ul>
Tuesday 1 July, 1-3PM	499A class: <ul style="list-style-type: none"> <li>Discuss <i>Red Velvet</i>, whole play</li> </ul>

Tuesday 1 July, 7:00PM	SHOW 3 Agatha Christie's <i>Witness for the Prosecution</i> at London County Hall
Wednesday 2 July, 1-3PM	499A class: <ul style="list-style-type: none"> <li>• Discuss <i>Witness for the Prosecution</i></li> <li>• Crash course on reading Shakespeare</li> </ul> <b>*Term Paper Proposal due by 11:59PM</b>
Thursday 3 July, 1-3PM	499A class: <ul style="list-style-type: none"> <li>• Discuss <i>Merry Wives of Windsor</i>, Acts 1 and 2 (available on Canvas)</li> </ul> <b>*Reading Response due by 11:59PM</b>
Thursday 3 July, TIME TBD	<u>Westminster</u> Abbey tour
Friday 4 July, TIME	Day trip to Windsor <ul style="list-style-type: none"> <li>• Visit Windsor Castle</li> <li>• Visit Windsor Great Park</li> </ul>
Saturday 5 July, 7:30PM	SHOW 4 Shakespeare's <i>Merry Wives of Windsor</i> at Shakespeare's Globe

#### Week 4: 7-13 July

Date and Time	Activity
Monday 7 July, 1-3PM	499A class: <ul style="list-style-type: none"> <li>• Discuss Globe's <i>Merry Wives</i></li> <li>• Discuss <i>Merry Wives</i>, Acts 3 and 4</li> </ul>
Tuesday 8 July, 12-2PM	499A class: <ul style="list-style-type: none"> <li>• Discuss <i>Merry Wives</i>, whole play</li> </ul>
Tuesday 8 July, 3:30PM	Tour Shakespeare's Globe
Wednesday 9 July, 10-12AM	499A class: <ul style="list-style-type: none"> <li>• Group Performances: <i>Red Velvet</i> and <i>Merry Wives</i></li> </ul> <b>*Theatre Response due by 11:59PM</b>
Thursday 10 July, 1-3PM	499A class: <ul style="list-style-type: none"> <li>• Term paper peer review</li> <li>• Course wrap up</li> </ul>
Saturday 12 July, 6PM	Farewell Dinner <u>The White Horse</u>
Sunday 13 July	Leave London

#### Week 5: 18 July

Date and Time	Activity
Friday 18 July, 11:59PM ET	<b>*Term paper assignment due by 11:59PM ET</b>